

# INDUSTRIAL VALLEY ES CONTINGENCY PLAN FOR COVID 19

PANDEMIC





# **IVES Learning Continuity Plan**

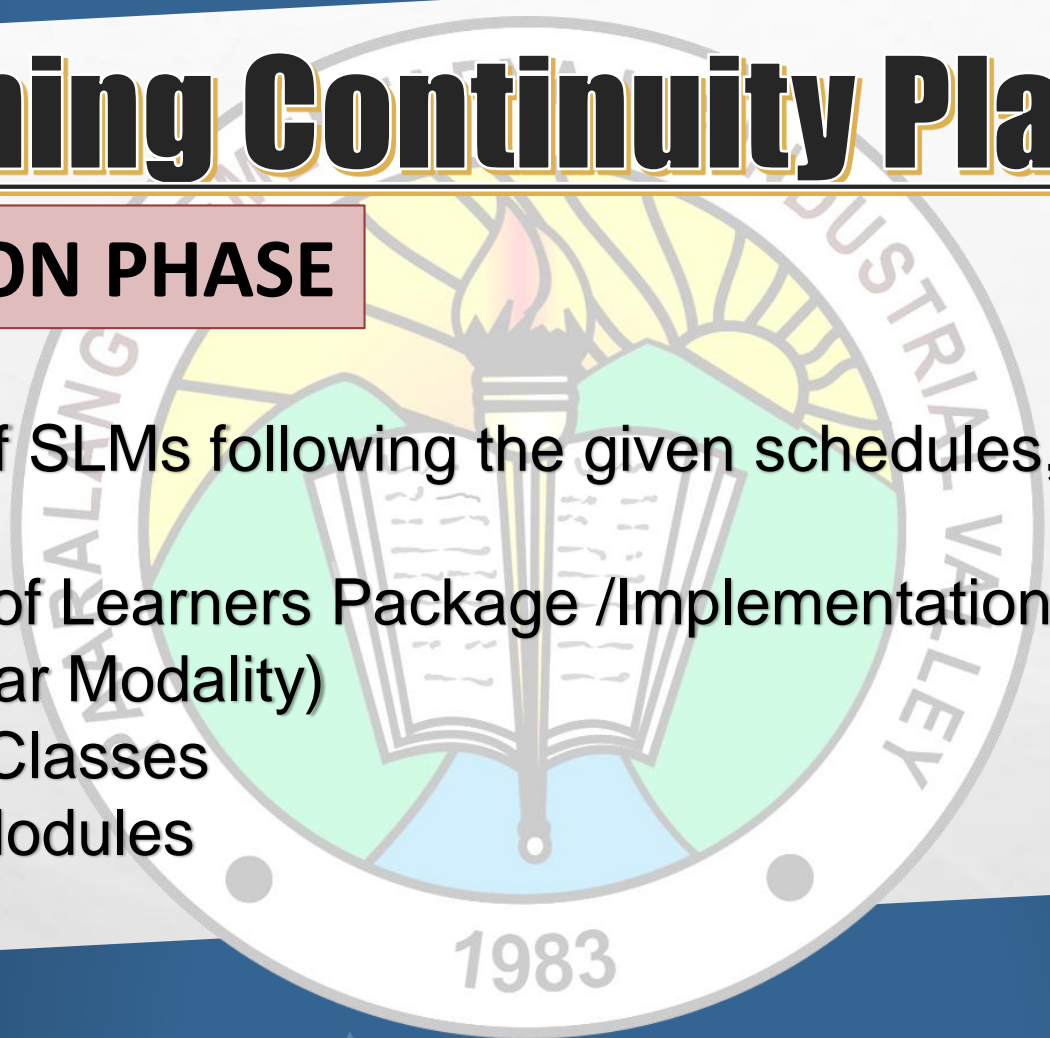
## **PRE-IMPLEMENTATION PHASE**

1. Creation of Class Organization
2. Creation of Committee Per School
3. Distribution of Pass (ID for parents & learners)
4. Preparation of Class Schedule
5. Identification of Rooms to be Utilized ( distribution and retrieval of SLMs)
6. Conduct of Orientation (teacher, parents, learners, and other stakeholders)
7. Conduct of Simulation Distribution of Pass/Books Retrieval

# **IVES Learning Continuity Plan**

## **IMPLEMENTATION PHASE**

1. Distribution of SLMs following the given schedules, safety protocols and process flow
2. Actual Usage of Learners Package /Implementation of Distance Learning (Online/Modular Modality)
3. Monitoring of Classes
4. Retrieval of Modules





# IVES Learning Continuity Plan

## POST- IMPLEMENTATION PHASE

### 1. Monitoring of Learners' Outputs by Quarter

\*Update parents/guardians about their children's academic progress.

### 2. Retrieval of SLMs every after two weeks and accommodation of parents' feedback on the utilization of LDM and SLMs.

# Response Plan

## INTRODUCTION

### 1. IVES COVID 19 Implementing Guidelines

This COVID-19 response plan is the school's DRRM Team commitment to implement guidelines to help prevent the spread of the virus approved by the School Head

1. *display information on the signs and symptoms of COVID-19 and correct hand-washing techniques*
2. *adapt the workplace to facilitate physical distancing*
3. *keep a contact log to help with contact tracing*
4. *intensify cleaning in line with government advice*
5. *develop a procedure to be followed in the event of someone showing symptoms of COVID 19 while at work or in the workplace*



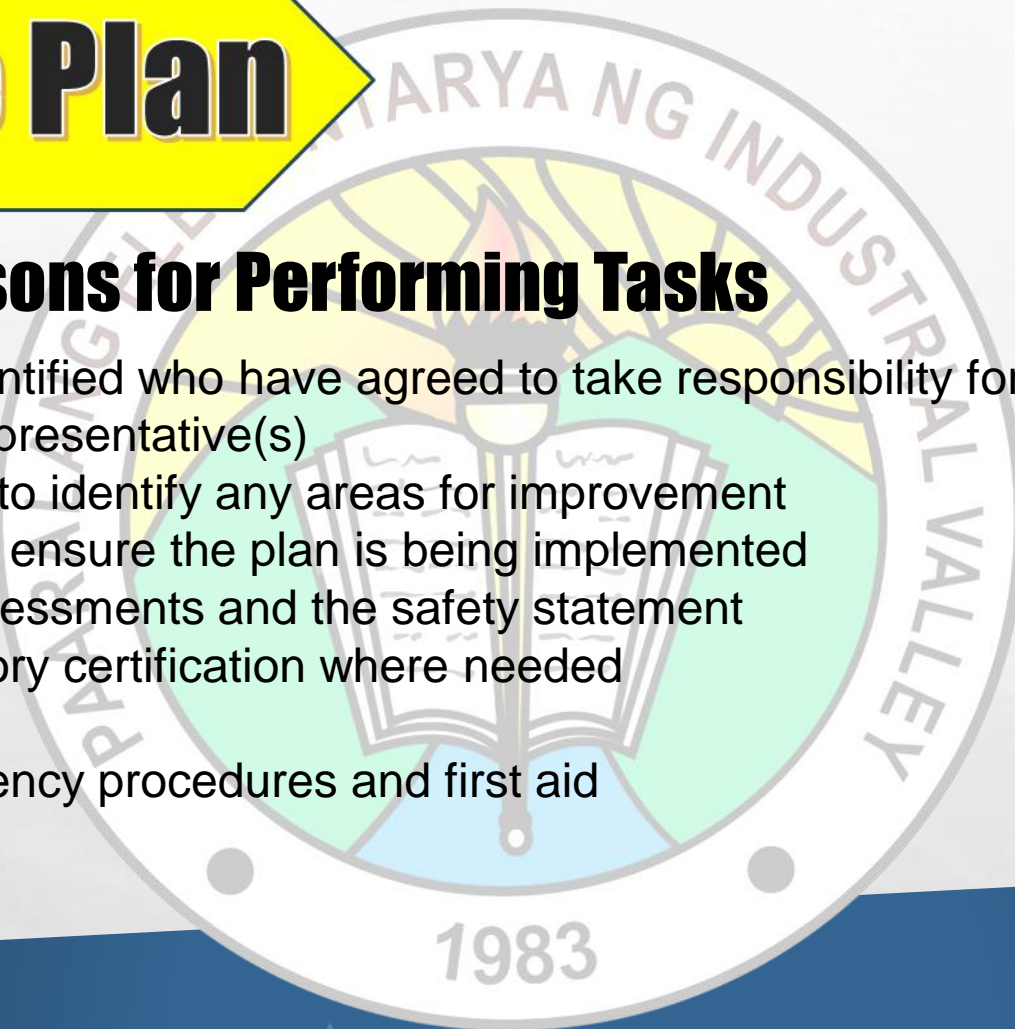
# Response Plan

## INTRODUCTION

## 2. Responsible Persons for Performing Tasks

Persons have been identified who have agreed to take responsibility for carrying out tasks such as:

- role of worker representative(s)
- use of checklists to identify any areas for improvement
- regular checks to ensure the plan is being implemented
- review of risk assessments and the safety statement
- renewal of statutory certification where needed
- training
- reviewing emergency procedures and first aid

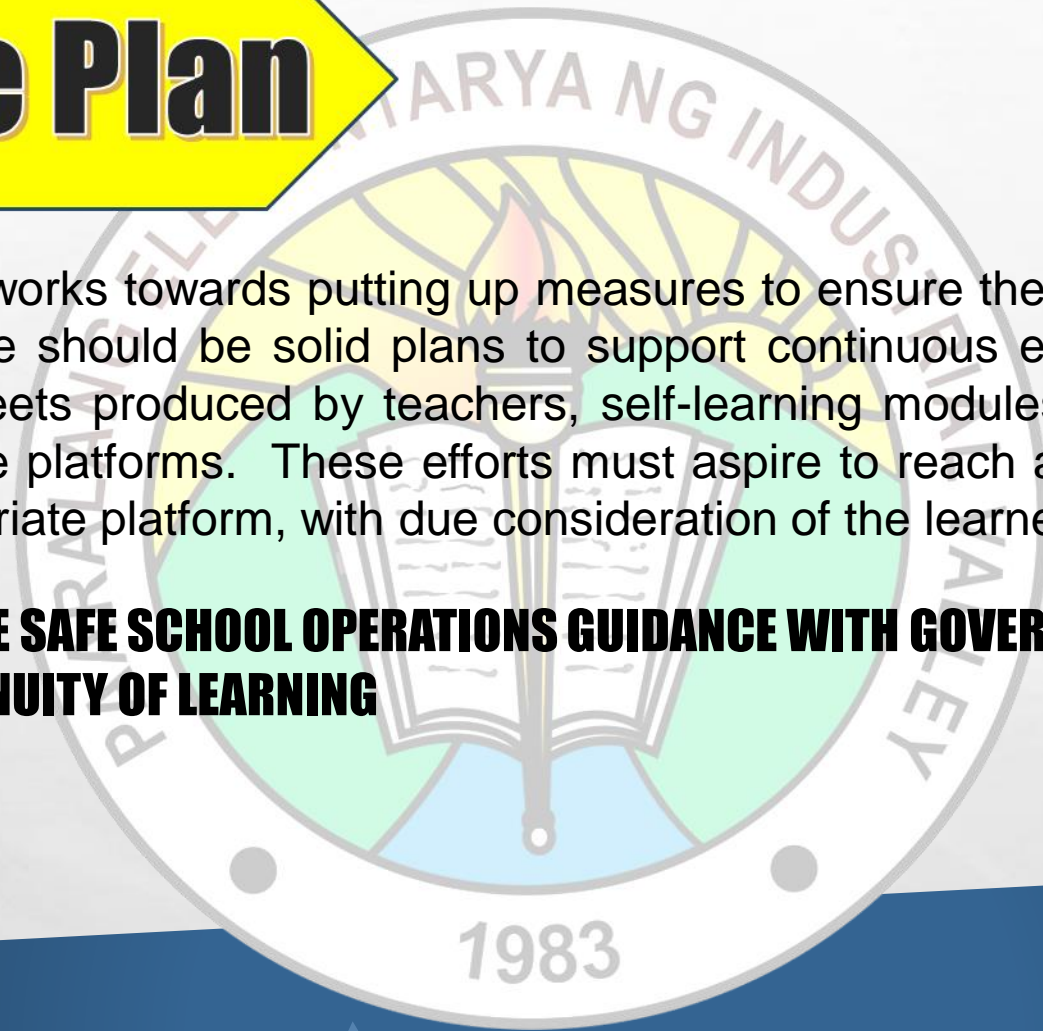


# Response Plan

## INTRODUCTION

IVES have initiated works towards putting up measures to ensure the continuity of learning. Where schools are closed, there should be solid plans to support continuous educational activities, such as availability of activity sheets produced by teachers, self-learning modules (SLMs) and maximized the used of prescribed online platforms. These efforts must aspire to reach all children in Industrial Valley Complex with an appropriate platform, with due consideration of the learners individual capability.

- 1. IMPLEMENT THE SAFE SCHOOL OPERATIONS GUIDANCE WITH GOVERNMENT AND LOCAL PARTNERS**
- 2. ENSURE CONTINUITY OF LEARNING**





# School Required Health Standards

## **1. Increase Physical and Mental Resilience**

Safe delivery of essential school-based services like continuous feeding program, reporting of essential personnel and any other related engagement to daily physical activities provided physical distancing is observed.

1983



# School Required Health Standards

## 2. Reduce Transmission

To reduce transmission, the school provides infographics on health safety protocols, regular sanitation on places where parents are often entertained, putting up alcohol station for hand washing and checking of temperature before going inside the school premises. No face shield and No facemask No Entry policy is strictly implemented.

1983

# **School Required Health Standards**

## **3. Reduce Contact**

To reduce contact in all school personnel and stakeholders going in and out of the school premises, IVES implemented school-based Health Declaration Form by scanning the posted QR Code or google forms, information dissemination, meetings, webinars and conferences are through online platform services.



# School Required Health Standards

## 3. Reduce Contact

Alternative Work Arrangement (CSC Memorandum Circular No.10,s.202 and revise DepEd Order No.011,s. 2020) strictly implemented.

| TIME      | DAILY  | MONDAY              | TUESDAY             | WEDNESDAY        | THURSDAY            | FRIDAY   | SATURDAY                             |
|-----------|--|---------------------|---------------------|------------------|---------------------|--|--------------------------------------|
| <b>AM</b> | OIC-Principal<br>School Clerk (City-paid)<br>Library-Aide (City-paid)<br>Utility (City-paid)<br>2 Security Guards<br>(City-paid) | Kinder<br>Teachers  | Grade 3<br>Teachers | Grade 4 Teachers | Grade 5<br>Teachers | Distribution<br>and<br>Retrieval of<br>Modules | 2 Security<br>Guards (City-<br>paid) |
| <b>PM</b> |  | Grade 2<br>Teachers | Grade 1<br>Teachers | Grade 6 Teachers |                     |  |                                      |



# Barangay Map

## INTRODUCTION

Industrial Valley Complex map

Switch map





# **DISAGGREGATED DATA ON POPULATION AND RESOURCES**

Industrial Valley Elementary School is situated in Industrial Valley Complex which is located along Marcos Highway which is very accessible going to Quezon City, Antipolo and Rizal. The complex is composed of Cinco Hermanos Subd., Monte Vista, Industrial Valley Subd., and Olandes, where IVES is exactly located.

Industrial Valley Elementary School has 21 instructional rooms and 9 non-instructional rooms, which are all powered by electrical grid. This school-year 2020-2021, in the New Normal Education System IVES has 1,345, (687 male and 658 female) pupils enrolled (As of October 2020 enrolment) and a class size of around 45 pupils per class.

1983



# **DISAGGREGATED DATA ON POPULATION AND RESOURCES**

Classes are conducted into two shifting, morning (Grade I, III, and VI) and afternoon sessions (Grade II, IV and V) which best fit for the availability of classrooms. Due to COVID-19 classes are conducted based on the learners' chosen modality. For modular learners, SLMs are provided and distributed through their designated schedules. For online learners, they are enrolled in the SDO prescribed platforms and classes are conducted through google meet.



# **DISAGGREGATED DATA ON POPULATION AND RESOURCES**

The school has 36 teaching personnel under the nationally-funded plantilla positions. Teacher assignments for nationally-funded teachers working in this school were given ancillary services rendered as a guidance teacher, librarian, property custodian, office clerk, canteen manager and coordinators. Amabelle H. Santiago is the newly assigned officer-in-charge of the school, acting as the School Principal.

# SITUATION REPORTS AND STATISTICS

## INTRODUCTION

**As of February 28, 2021**

| Confirmed cases | Recoveries | Deaths | Active Cases | Home Quarantine | Admitted | Suspected Cases |
|-----------------|------------|--------|--------------|-----------------|----------|-----------------|
| 187             | 181        | 4      | 2            | 2               | 0        | 0               |

All families whose member or members are diagnosed COVID-19 positive were given basic necessities assistance from the barangay until they're fully recovered and tested negative.

Contact tracer from PNP called the attention of the suspected family for free swab testing



# BARANGAY COVID-19 ADVISORIES

- At present, Industrial Valley Complex has recorded a total of 187 COVID-19 cases as of February 28, 2021.
- Consistent monitoring on the communities health status through the Barangay Health Center, Health Committee and Disaster Team.
- A 14-day quarantine is required to individual who seek for health certification especially for travel purposes.
- Based on the recent conduct of Contact Tracing 2 are under Home Quarantine and 2 are in the Recovery center of the city for proper monitoring and observation.
- Of the 187 confirmed cases, 181 are recovered patients and zero suspected individual and none is currently admitted.
- Everyone in the community is expected to follow prescribed health safety protocols to avoid COVID-19 infection. Practice physical distancing and minimum health standards.

# **HISTORICAL DATA/RECORDS ON PAST DISASTERS OR CRISES**

Industrial Valley Complex has been prone to flooding and every calamity devastating this area is the community's struggles to find ways to recover very soon. Every disaster that upended the riverside neighborhood at Barangay Industrial Valley Complex took everything except from the self that was being saved.

The following typhoon had devastated Industrial Valley Complex, Marikina City in the latter part of the 21<sup>st</sup> century

- Ondoy
- Habagat
- Eulysses

This 2020, the historical attack of modern pandemic COVID-19.

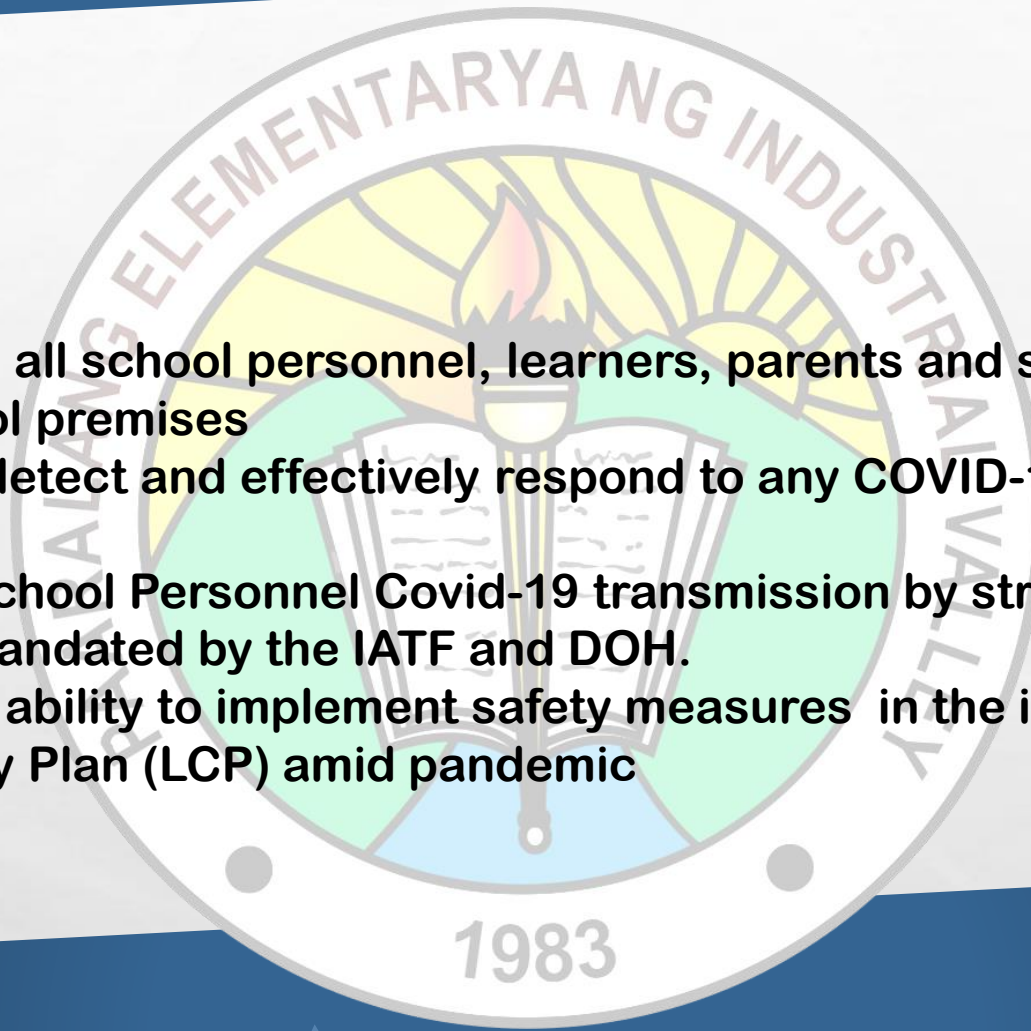


# DRRM UPDATES AND TRENDS

- Remarkable resilience of Disaster Risk Reduction Management in the Philippines most specifically the Marikina City DRR Team.
- Improve community knowledge on hazards, vulnerability and risk assessments
- Educate especially those who are vulnerable community on early warning systems and evacuations
- Promote Risk Transfer Mechanisms
- Capacity building for disaster preparedness is consistently conducted
- Strengthen Response and relief operations
- Rehabilitation, recovery and reconstruction are well integrated in the Contingency Plan

# **I-OBJECTIVES**

1. Ensure the safety of all school personnel, learners, parents and stakeholders going in and out of the school premises
2. To prevent, rapidly detect and effectively respond to any COVID-19 outbreak that may take place
2. Reduce the risk of School Personnel Covid-19 transmission by strengthening the Health Safety Protocols mandated by the IATF and DOH.
3. Ensure the school's ability to implement safety measures in the implementation of Learning Continuity Plan (LCP) amid pandemic







## II- COVID-19 and Its Impact

| Situations   | Bad Scenarios   | Worse Scenarios  | Worst Scenarios  |
|--|---|--|--|
| Description  | 10% of the total population of the school both learners and school personnel are identified infected individuals in Brgy. IVC.              | 20% of the IVC infected individuals are identified despite the existence of the alarming status in the community.                  | 50% of the community are identified infected individuals and isolation areas are limited   |
| Impact on Human Lives                                | Of the infected 10% or 140 school population, 40 are identified positive of COVID-19  | The 40 COVID-19 positive individuals, infected each family and are asymptomatic identified through contact tracing                 | 10 of the 40 COVID-19 positive individuals died . All are members of IVC community.  |
| Impact on infrastructure, Facilities and Environment | In the event of overwhelming cases, IVC will be used as isolation area  | In the increase of infected cases, all available facilities will be utilized.  | All IVC personnel will be exposed to danger and the school might be a possible habitat of COVID -19 virus.   |
| Response Capabilities                                | IVC DRRM Team in cooperation with the LGUs, SDO, NGOs and stakeholders will be tasked to organize provision of assistance affected learners | Limited funding can lead to scarcity of assistance or relief goods distributed to affected learners or individuals related to IVC. | Limited funding means limited resources. Available resources may not suffice the needs of affected individuals and may result to rampage or commotion in the community if not looting. |

# Table 1: Estimated number of Dead, Probable and Suspect cases.

Source: City Health Office - Marikina City

| Region | Cities   | Barangay         | Active Cases | Patients Recovered | Death |
|--------|----------|------------------|--------------|--------------------|-------|
| NCR    | Marikina | Barangka         | 19           | 43                 | 5     |
|        |          | Concepcion Dos   | 6            | 66                 | 3     |
|        |          | Concepcion Uno   | 23           | 139                | 11    |
|        |          | Fortune          | 13           | 80                 | 3     |
|        |          | IVC              | 8            | 34                 | 2     |
|        |          | Jesus Dela Pena  | 10           | 36                 | 1     |
|        |          | Kalumpang        | 25           | 65                 | 4     |
|        |          | Malanday         | 60           | 133                | 8     |
|        |          | Marikina Heights | 18           | 80                 | 3     |
|        |          | Nangka           | 32           | 72                 | 4     |
|        |          | Parang           | 16           | 86                 | 1     |
|        |          | San Roque        | 19           | 64                 | 0     |
|        |          | Sta. Elena       | 0            | 46                 | 1     |
|        |          | Sto. Nino        | 32           | 129                | 4     |
|        |          | Tanong           | 18           | 47                 | 3     |
|        |          | Tumana           | 21           | 36                 | 1     |
|        |          |                  |              |                    |       |
|        | TOTAL    |                  | 320          | 1,156              | 54    |



# Table 2. Exposed IVES Learners, Teaching and Non-Teaching Personnel

Source: SDO LESF Data

| IVES STAFF   | NUMBER |
|--------------|--------|
| SCHOOL HEAD  | 1      |
| TEACHING     | 36     |
| NON-TEACHING | 4      |
| LEARNERS     | 1345   |

# Table 3. Enrolment Data for Shool-Year 2020-2021

Source: IVES Enrolment Data

| GRADE LEVEL | NO.OF ENROLMENT |        | TOTAL |
|-------------|-----------------|--------|-------|
|             | MALE            | FEMALE |       |
| KINDER      | 90              | 88     | 178   |
| GRADE 1     | 95              | 98     | 193   |
| GRADE 2     | 118             | 109    | 191   |
| GRADE 3     | 85              | 94     | 179   |
| GRADE 4     | 90              | 86     | 178   |
| GRADE 5     | 90              | 86     | 176   |
| GRADE 6     | 109             | 92     | 201   |
| TOTAL       |                 |        | 1345  |



### **III. Activation, Deactivation and non-activation of Contingency Plan**

#### **A. Activation**

The contingency plan shall be activated and implemented based on the risk situation of the covid-19 pandemic in Barangay Industrial Valley Complex most specifically Industrial Valley Elementary School upon the opening of SY 2020-2021. The School Head shall mobilize and implement necessary response and mitigation actions at the school level in accordance to the directions mandated by the Schools Division Office in coordination with the Barangay Response Team and Local Government Unit of Marikina City's DRRM Team.

1983

### **III. Activation, Deactivation and non-activation of Contingency Plan**

#### **B. Deactivation**

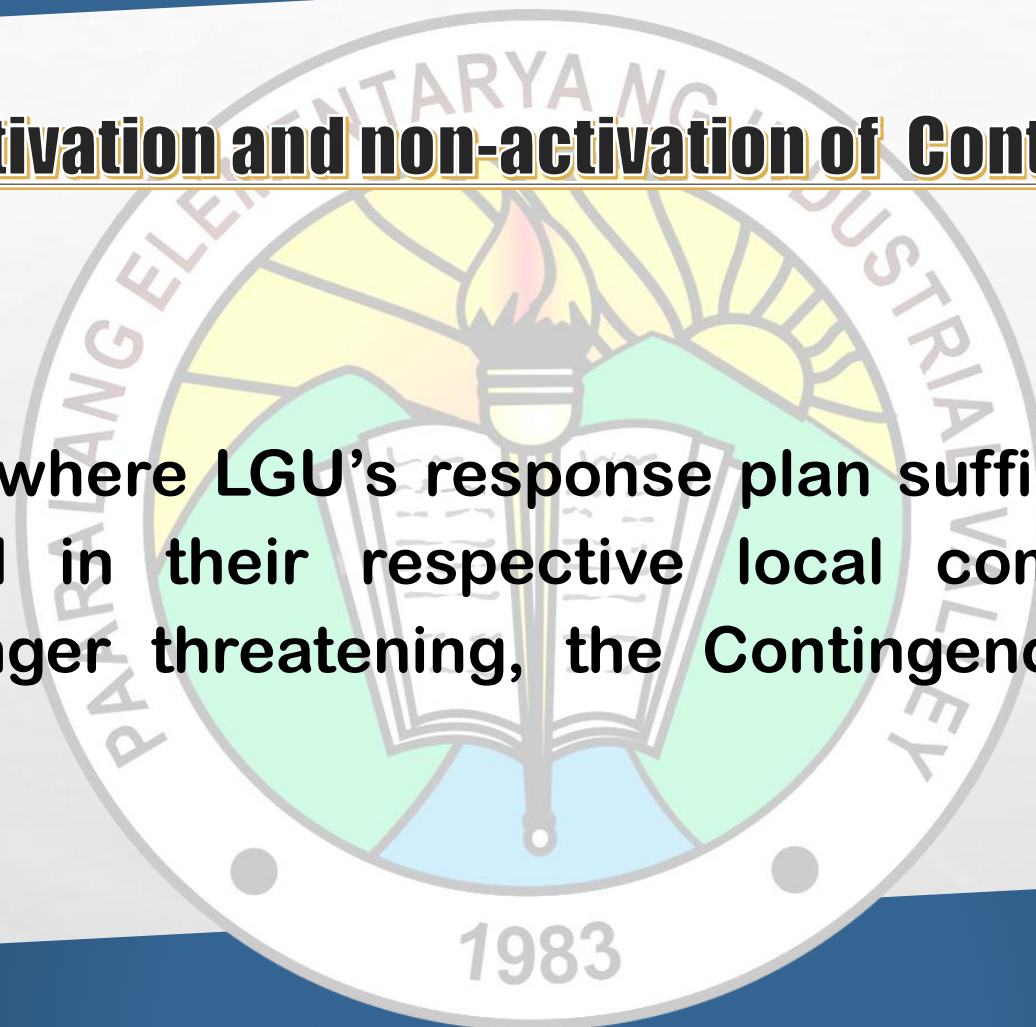
In case of the availability of covid19 pandemic vaccine and treatment, upon the declaration of the Secretary of DOH, RD's, SDS's, LGUs and school heads and the recommendation of IATF or other authorized agencies and government officials, deactivation of the Learning Continuity Plan will be put to action. If it approves, the RD through Regional DRRMC will mandate the recommendation for demobilization and deactivation of the CPs and Normal Alert Status which will proceed to the realization of the transition to recovery.



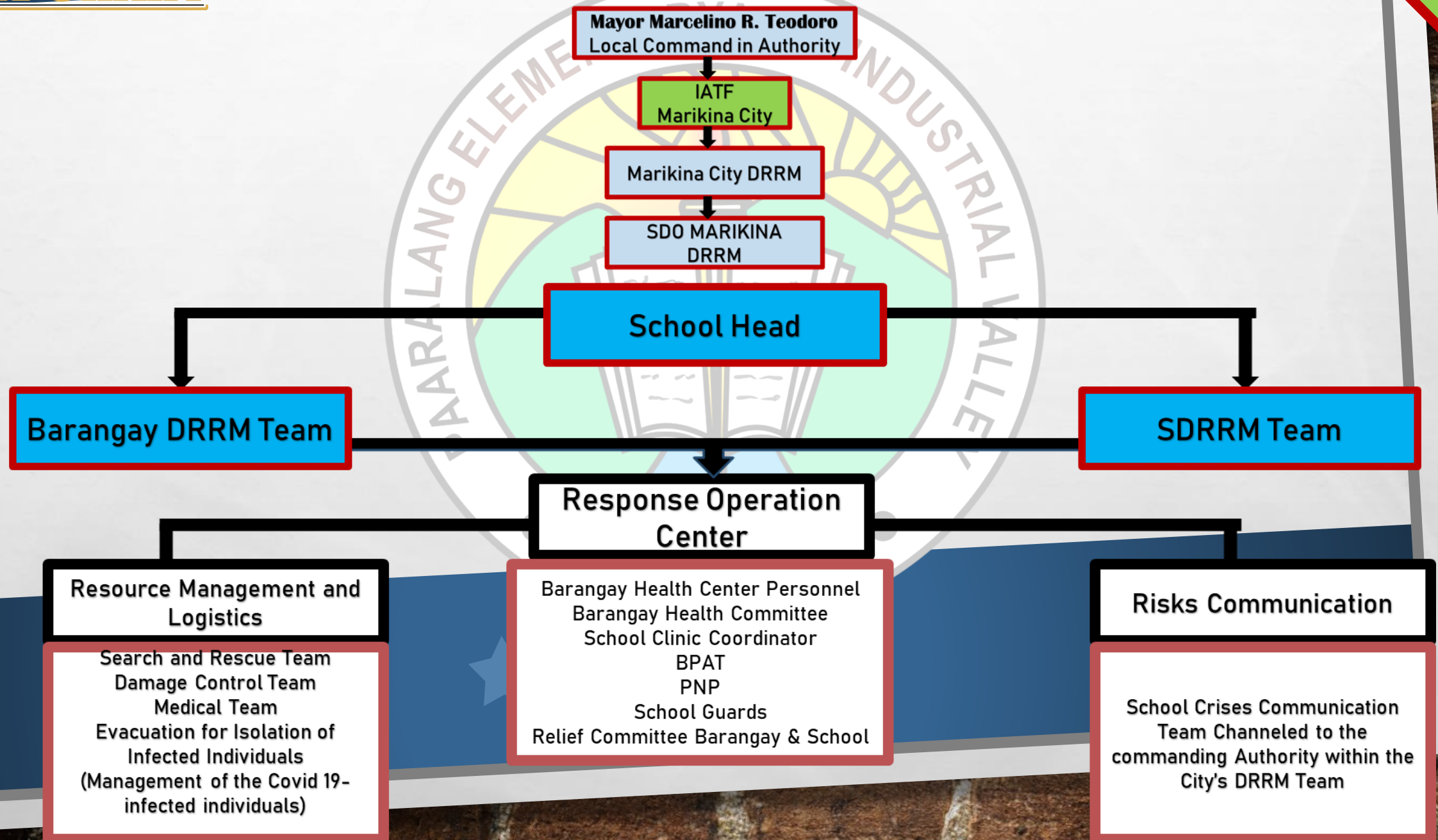
### **III. Activation, Deactivation and non-activation of Contingency Plan**

#### **C. Non-activation**

In the event where LGU's response plan suffice the needs of the affected individual in their respective local communities, and the situation is no longer threatening, the Contingency Plan will not be activated.



# FLOW CHART





# IVES CAMP MANAGEMENT

## STEP 1

### Preparatory Activities

Conduct Orientation to IVES Camp Management Teams on the protocols in managing emerging and infectious diseases or disaster prior to deployment in cooperation with Barangay IVC DRRM Team

Preposition PPE for Camp Management Personnel, volunteers, other Health Safety Protocol Requirements and rescue operation equipment.

Strictly limit the number of authorized personnel in the camp, decongest as necessary to avoid overcrowding. (especially when face-to-face learning will be implemented)





# IVES CAMP MANAGEMENT

## STEP 2

### Implementation

- Ensure the implementation of Health Safety Precautions to reduce transmission.
- Posting of infographics and written reminders within and outside the school premises
- In cases of flooding, accommodation areas, tents, modular are properly distanced to prevent COVID-19 transmission, though Ives is not an evacuation center still can be utilized as emergency center for non-flooding related disaster like pandemic.
- designate two families per classroom to avoid congestion and maintain physical distancing
- Coordinate with the Barangay DRRM Team to provide family modular tents in IVS covered court assigned as IVC evacuation center during the occurrence of flood to ensure physical distancing and sense of privacy





# IVES CAMP MANAGEMENT

## STEP 2

### Implementation

During possible face-to-face classes, classroom must observe all precautionary measures and Health Safety Protocols recommended by the IATF and as approved by the President of the Philippines.

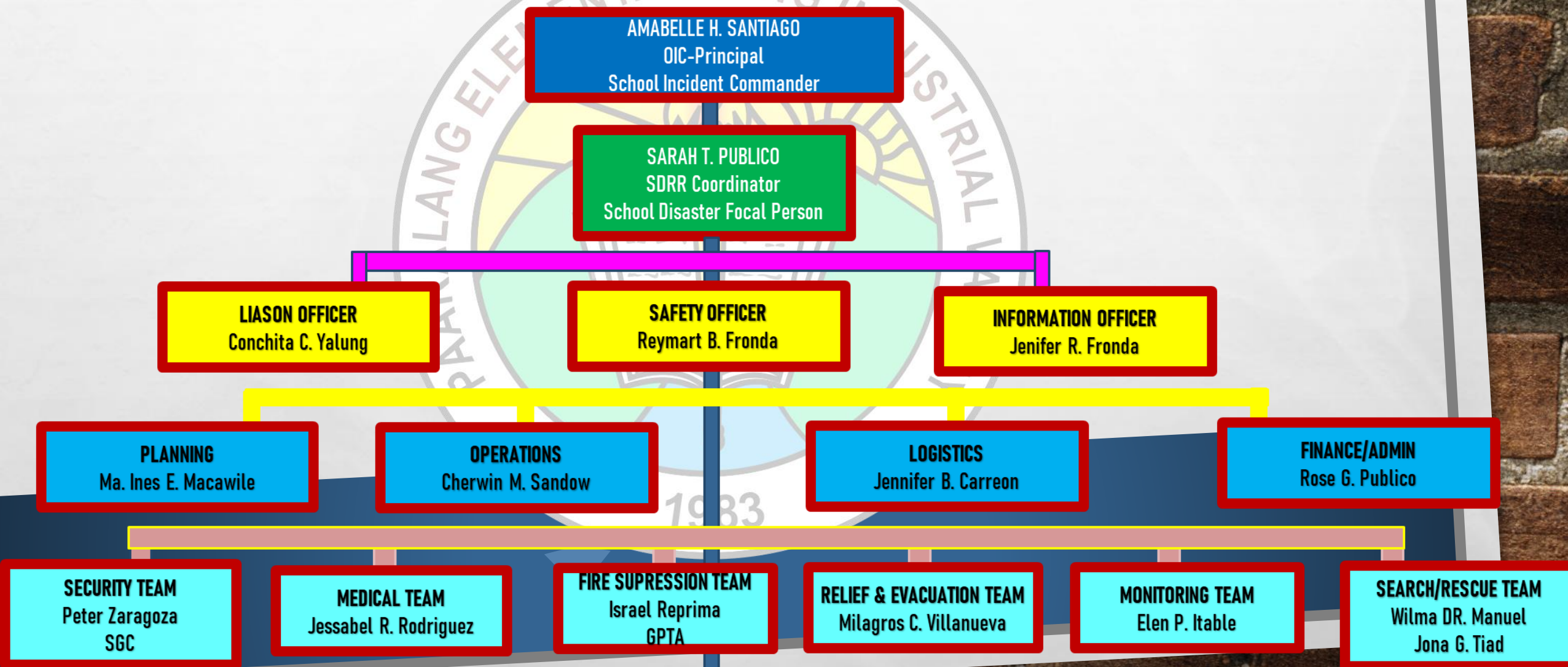
- Alcohol station and hand washing area
- Each learner must have personal sanitizing kit
- Wearing of mask and face shield
- Observe social distancing
- Sitting arrangement must be 50% less than the normal capacity
- Go bag and emergency kits should be required to the learners in in

cases of  
earthquake, flooding and other emergencies.



# IV. Coordination, Command and Control (Incident Command System - ICS)

IV





# **COMMAND, COORDINATION AND COMMUNICATION**

| AGENCY       | GAPS/AREAS FOR COLLABORATION  | TIMELINES  |
|--------------|---|------------|
| <b>LGU</b>   | <ul style="list-style-type: none"> <li>• Strengthening the coordination between the City DRRMO and SDRR programs and projects</li> <li>• Intensifying training for School DRR Team</li> <li>• Posting of transparent and comprehensible information dissemination and management mechanisms on Health standards and protocols.</li> <li>• Strict implementation of the Health Safety Protocols as prescribed by the IATF and authority in command</li> <li>• Provision of basic necessities to learners infected by COVID-19</li> </ul> | YEAR-ROUND |
| <b>DepEd</b> | <ul style="list-style-type: none"> <li>• Maximizing of DRRM function at school level of the Department</li> <li>• Strengthening the Capacity Building among teachers and school heads on ICS, SDRR Team, etc.</li> <li>• Provision of Standardized School disaster Management and Contingency plans for Covid19 pandemic</li> <li>• Capacitating all school focal person in contact tracing and assisting the learners, teaching and non-teaching personnel who will have asymptomatic symptoms of COVID 19</li> </ul>                  | YEAR-ROUND |

# **COMMAND, COORDINATION AND COMMUNICATION**

| <b>AGENCY</b>                   | <b>GAPS/AREAS FOR COLLABORATION</b>  | <b>TIMELINES</b>  |
|---------------------------------|--|-------------------|
| <b>DILD<br/>Barangay</b>        | <ul style="list-style-type: none"> <li>• Reinforcement of the involvement and participation of the schools in the Community based DRRM implementation in the prevention of community transmission of Covid19 contagion</li> <li>• Involvement of the school in the barangay response plan on COVID 19.</li> <li>• Provision of updated data and statistic record authorized SDRR personnel for documentation purposes every after occurrence of disaster or pandemic or when needed</li> </ul> | <b>YEAR-ROUND</b> |
| <b>BFP</b>                      | <ul style="list-style-type: none"> <li>• Coordination and communication of the Disinfection and flushing of schools</li> </ul>   | <b>YEAR-ROUND</b> |
| <b>MWSS</b>                     | <ul style="list-style-type: none"> <li>• Ensure enough , safe, quality water supply to the hand wash facilities and lavatories</li> </ul>  | <b>YEAR-ROUND</b> |
| <b>PHILIPPINE RED<br/>CROSS</b> | <ul style="list-style-type: none"> <li>• Provision of assistance in capacity-building on COVID-19 mitigation scheme through education dissemination of proper Handwashing, PPE utilization orientation and COVID-19 testing procedures to the school teaching personnel.</li> </ul>  | <b>YEAR-ROUND</b> |



# COMMAND, COORDINATION AND COMMUNICATION

IV

| COMMUNICATION LEVELS | DAY 1  | DAY 2   | DAY 3   | REMARKS  |
|----------------------|--|---|---|--|
| <b>School Level</b>  | <ul style="list-style-type: none"> <li>Activate the Command Operation Centers</li> </ul>   | <ul style="list-style-type: none"> <li>Identify the initial need assessment and impact</li> </ul>                       | <ul style="list-style-type: none"> <li>School DRRM Focal Person Shall consolidated all reports</li> </ul>                         | All possible and available means of communication shall be utilized.   |
|                      | SH and SDRR Team conduct the initial RADAR report System or the Risk information on COVID 19 asymptomatic individual from SDO-DRRM Team and Barangay DRRM Team | SH & SDRR Team shall consolidated RADAR report the focal Person or Risk information on COVID 19 asymptomatic individual | SDRRM Focal Person Shall report to the SH and SDO-DRR Focal Person about the Risk information on COVID 19 asymptomatic individual | Reporting Protocols from school-Division must be observed              |
|                      | Monitoring and Tracking of affected School Personnel and learners (pandemic or calamities)   | Validating the monitored of affected Schools personnel & learners (pandemic or calamities)                              | Finalizing the report on affected school personnel and learners (infected, Casualties, injured & survivor)                        | validation and finalization of report shall be addressed               |
|                      | Family Reunification Plan  | Identify the initial assessment of affected families and learners   | Turn-over the said reports and need assessment to the concern agencies and officials  | Family Reunification Plan must be in compliance in D.O. No. 27 s. 2015 |

## V. TIMELINE, RESPONSE, & EARLY RECOVERY MEASURES OF SCHOOL

| TIMELINE      | RESPONSE ACTION   |   |  |
|---------------|---|---|--|
|               | REGION  | DIVISION  | SCHOOL   |
| <b>BEFORE</b> | <ul style="list-style-type: none"> <li>Strengthen the Regional DRRM Team for response.</li> <li>Consultative partnership with LGU's and other government agencies.</li> </ul> | <ul style="list-style-type: none"> <li>Enhance COVID-19 Task Force and close coordination with Rescue 161, City Health Office and Philippine Red Cross</li> <li>Procurement of PPE and COVID-19 response equipment</li> </ul> | <ul style="list-style-type: none"> <li>Coordinate with the Barangay-led clusters, most especially the Barangay Health Center (on COVID-19 pandemic) (on use of evacuation centers)</li> <li>Procurement of PPE and COVID-19 response equipment for school frontliners</li> </ul> |



# V. TIMELINE, RESPONSE, & EARLY RECOVERY MEASURES OF SCHOOL

| TIMELINE | RESPONSE ACTION   |   |   |
|----------|---|---|---|
|          | REGION  | DIVISION  | SCHOOL  |
| During   | <ul style="list-style-type: none"> <li>Monitoring of Pandemic Situation of region and SDO's.</li> <li>Support regional personnel for medical assistance and other needs.</li> </ul> | <ul style="list-style-type: none"> <li>Constant monitoring of COVID-19 cases in the city and barangays to utilize support groups in addressing the IATF Health protocols</li> </ul> | <ul style="list-style-type: none"> <li>Oversight of communications within the disaster management response structure to constantly monitor COVID-19 cases among school personnel, learners and families</li> <li>Provide an information feedback mechanism, particularly at the school level, to listen to and check rumors and other false or misleading information related to COVID-19 involving the community within the school</li> <li>Intensify hygiene promotion, including consistent application of WASH practices, through dissemination of information, education and communication materials (in coordination with community or barangay)</li> </ul> |

# V. TIMELINE, RESPONSE, & EARLY RECOVERY MEASURES OF SCHOOL

| TIMELINE     | RESPONSE ACTION  |  |  |
|--------------|--|--|--|
|              | REGION   | DIVISION   | SCHOOL   |
| <b>AFTER</b> | <ul style="list-style-type: none"> <li>Due to availability of Medicine or Vaccine, learners, teachers and personnel are ready to return to schools and offices.</li> </ul> | <ul style="list-style-type: none"> <li>Purchase of COVID-19 testing materials/vaccines and/or strengthen Contact Tracing in the Division with LGU partnership</li> </ul> | <ul style="list-style-type: none"> <li>Strengthen Contact Tracing in the school with LGU partnership</li> <li>Coordinate with the SDO-DRRM Team and LGUs in the provision of COVID-19 vaccine to those interested parties.</li> <li>Continuous monitoring to the health status of every school personnel, learners, parents &amp; visitors going in and out the school premises. Health monitoring covers the identification of signs and symptoms of COVID-19.</li> <li>Constant disinfection to the school and its facilities as part of the camp demobilization process.</li> </ul> |

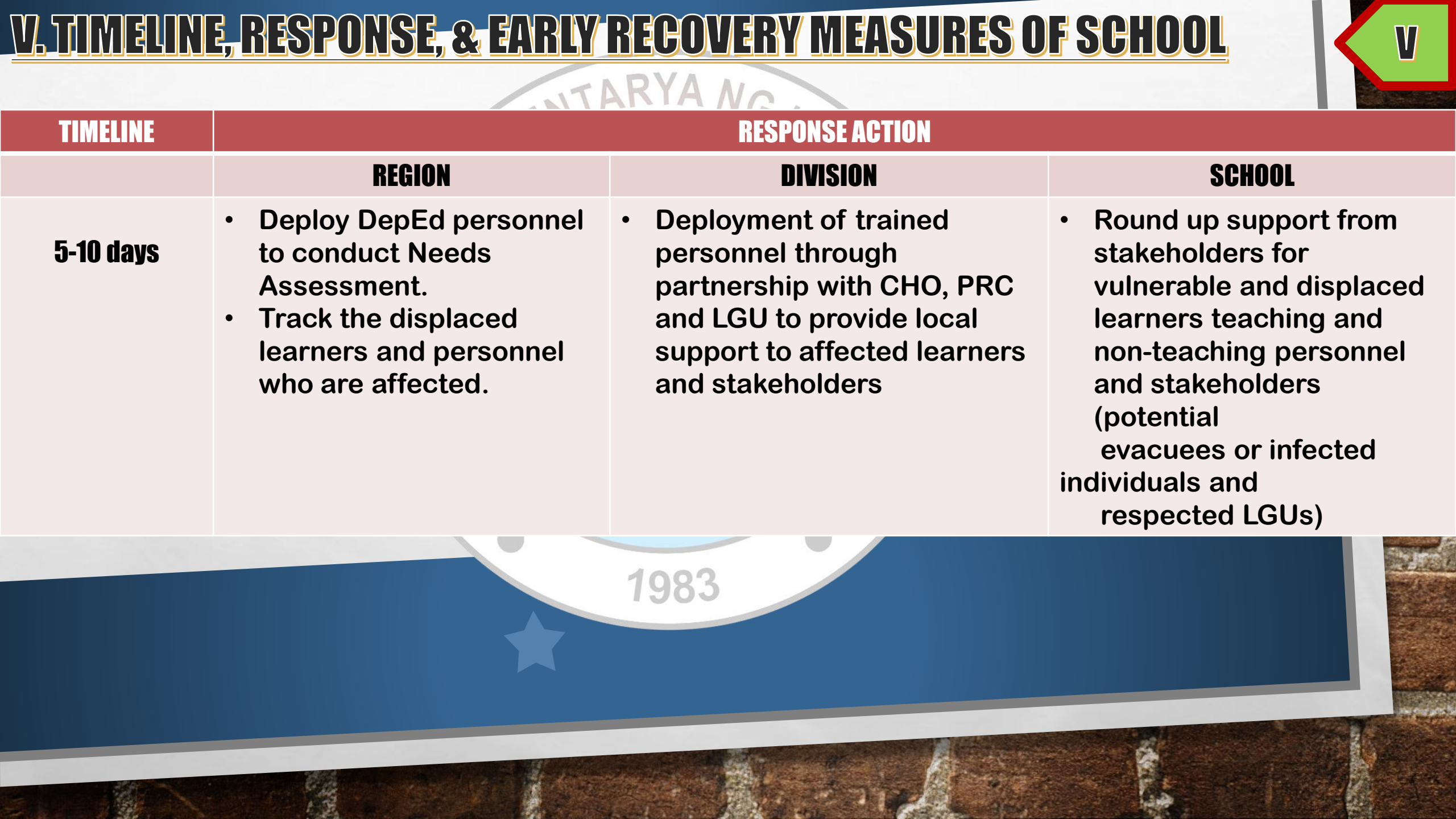


# V. TIMELINE, RESPONSE, & EARLY RECOVERY MEASURES OF SCHOOL

| TIMELINE          | RESPONSE ACTION   |   |   |
|-------------------|---|---|---|
|                   | REGION  | DIVISION  | SCHOOL  |
| <b>0-24 hours</b> | <ul style="list-style-type: none"> <li>Established coordination line with region and division offices with the situation of personnel.</li> <li>Gathered reports to SDO's and LGU's.</li> </ul>     | <ul style="list-style-type: none"> <li>Strengthen and keep the communication lines open to the Region, schools and LGU</li> <li>Provide database of affected Teaching and Non-Teaching Personnel in the time of pandemic to generate appropriate responses</li> </ul> | <ul style="list-style-type: none"> <li>Appropriate coordination and management of camps and collective accommodation to all means of preparation</li> <li>Provide an information feedback mechanism, particularly in the accurate number of affected school personnel at the school level, listen and check rumors and other false or misleading information related to COVID-19 involving the community within the school</li> </ul> |
| <b>24-28 hrs</b>  | <ul style="list-style-type: none"> <li>Coordinate with local government unit for the extended assistance to affected individuals.</li> <li>Continue gathering reports to SDO's and LGU's</li> </ul> | <ul style="list-style-type: none"> <li>Conduct needs assessment and delivery of Psychological First Aid and Mental Health Psycho Social Support to elicit mental fitness to DepEd employees</li> </ul>  | <ul style="list-style-type: none"> <li>Prioritize quick actions for protecting the school personnel, learners and parents who are infected with COVID-19 and provide proper health experts for their psychological and emotional recovery.</li> </ul>   |

| V. TIMELINE, RESPONSE, & EARLY RECOVERY MEASURES OF SCHOOL |   |  |   |
|--|---|--|---|
| V  |   |  |   |
| TIMELINE   | RESPONSE ACTION   |  |   |
|  | REGION  | DIVISION   | SCHOOL  |
| 72 hours   | <ul style="list-style-type: none"> <li>Conduct regional team meetings.</li> <li>Assist the needs of the affected individuals and help to coordinate with the concern agencies.</li> <li>Continue to generate and update date of affected learners, teachers and personnel.</li> </ul> | <ul style="list-style-type: none"> <li>Coordinate with NGO's to be able to secure significant supplies and materials to address DepEd employees' needs especially for the teachers</li> </ul>  | <ul style="list-style-type: none"> <li>Tap school's loyal stakeholders and Coordinate with the barangay, NGOs for relief assistance to affected school personnel, learners and parents for possible sources of relief goods and supplies for health safety protocols</li> <li>Encourage donors to leave donations at the schools designated donations hub, instead of directly distributing to Infected or affected individuals to prevent physical contact.</li> </ul> |
| 96 hrs   | <ul style="list-style-type: none"> <li>Submit report to the DepEd Head for the immediate response.</li> <li>Coordinate with SDO Officials for the use of schools as quarantine facilities if needed.</li> </ul>   | <ul style="list-style-type: none"> <li>Regular submission of verified reports in order to give concrete Impact Analysis to the higher authorities</li> <li>*Consistent communication with School Heads and Teachers to provide technical and medical assistance</li> </ul> | <ul style="list-style-type: none"> <li>Submission of updated, verified and accurate reports of Covid-19 cases to commanding authorities for the provision of appropriate assistance.</li> </ul>   |

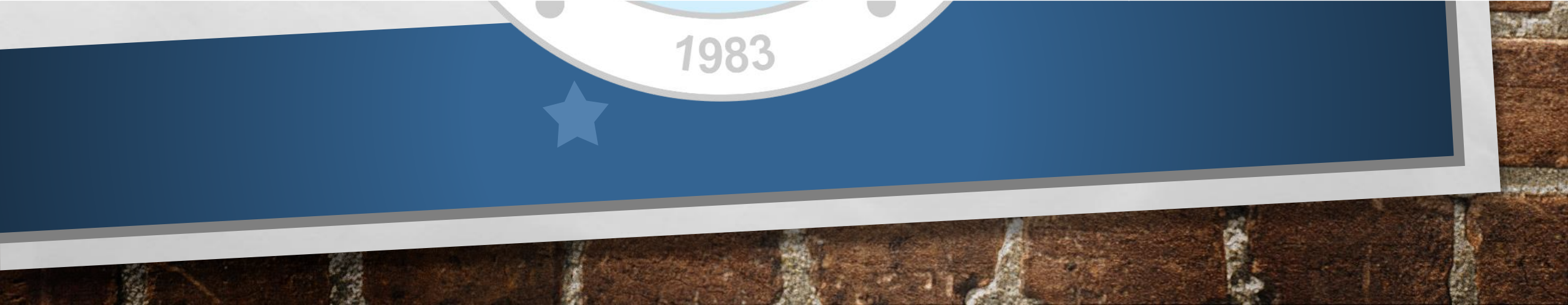




# V. TIMELINE, RESPONSE, & EARLY RECOVERY MEASURES OF SCHOOL



| TIMELINE  | RESPONSE ACTION  |  |   |
|-----------|--|--|---|
|           | REGION   | DIVISION   | SCHOOL  |
| 5-10 days | <ul style="list-style-type: none"><li>• Deploy DepEd personnel to conduct Needs Assessment.</li><li>• Track the displaced learners and personnel who are affected.</li></ul> | <ul style="list-style-type: none"><li>• Deployment of trained personnel through partnership with CHO, PRC and LGU to provide local support to affected learners and stakeholders</li></ul> | <ul style="list-style-type: none"><li>• Round up support from stakeholders for vulnerable and displaced learners teaching and non-teaching personnel and stakeholders (potential evacuees or infected individuals and respected LGUs)</li></ul> |

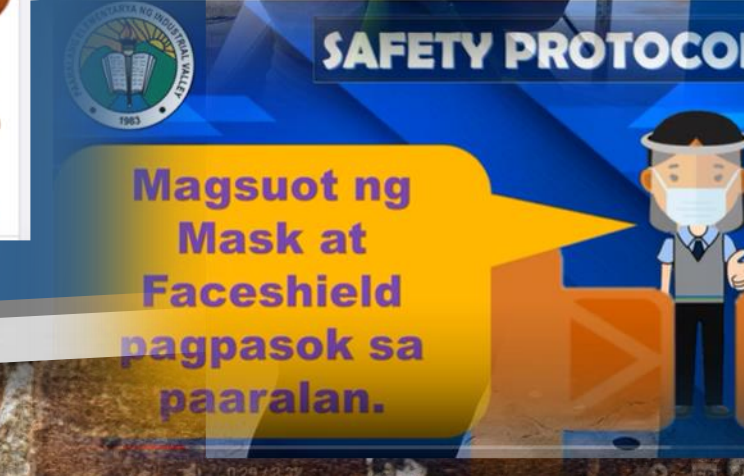
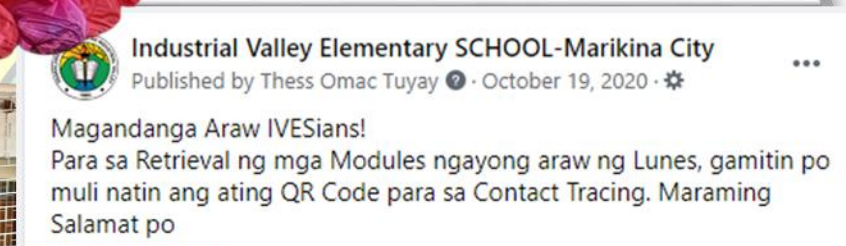


# PREVENTIVE MEASURES

V

- A. Conduct Orientation to SDRR Management Teams and ICS on the protocols in managing emerging and infectious diseases prior to deployment.
- B. Procure PPE for the school frontliners and members of the School's Camp Management Personnel and volunteers.
- C. Ensure coordination with the SDO-DRR Team, Barangay DRR Team , LGUs and other local health units' before, after and during the implementation of the contingency plan.
- D. Increase access to WASH facilities
- E. Ensure availability of handwashing soap, hand sanitizer/alcohol, and other disinfectants
- F. Ensure proper waste disposal
- G. Clear markings for social distancing at the school's designated places for service areas.
- H. Maintain and constantly update the Information Board, add information related to COVID-19 as necessary
- I. Intensify the promotion of hygiene, handwashing, and other health-seeking behaviors to prevent the spread of COVID-19
- J. Prohibit mass gatherings especially in common areas.
- K. Regular monitoring of the health status of all individuals come and go inside the school premises. Health monitoring covers the identification of signs and symptoms of COVID-19.
- L. Strengthen coordination and proper referral to Health Units to address possible COVID-19 cases.
- M. Strict implementation of "NO FACE MASK, NO FACE SHIELD, NO ENTRY POLICY."
- N. QR Code for Health Monitoring to lessen physical contact.







# INDUSTRIAL VALLEY ELEMENTARY SCHOOL

O. De Guzman St. Industrial Valley Complex, Marikina City  
Ives.Marikina@deped.gov.ph

Every CHILD is a different kind of flower. Altogether they make this WORLD  
a beautiful garden. Unique Teaching Resources



**Sama-Sama sa PagSULONG ng EduKalidad**



**Prepared by:**

  
**MARITES O. TUYAY**

**Submitted by:**

  
**SARAH T. PUBLICO**  
SDRR Coordinator

**Approved by:**

**AMABELLE H. SANTIAGO**  
OIC-Principal